

DAILY RESEARCH, 22 JUNI 2020

PT PROFINDO SEKURITAS INDONESIA

**GD PERMATA KUNINGAN LT 19
JL KUNINGAN MULIA KAV 9C GUNTUR SETIABUDI JAKARTA SELATAN 12980**

TELP +62 21 8378 0888

EMAIL : CUSTOMERSERVICE@PROFINDO.COM

WWW.PROFINDO.COM | PROCLICK.PROFINDO.COM

MARKET MOVERS



Bursa Amerika ditutup melemah setelah peningkatan kasus baru Corona Virus membuat investor khawatir akan ketidakpastian pemulihan ekonomi. DOW -0.80%, S&P -0.56%, NASDAQ +0.03%

Bursa saham Eropa ditutup menguat ditengah melonjaknya kasus penyebaran covid baru didorong rencana stimulus ECB diharapkan mampu memulihkan perekonomian. Indeks DAX +0.40%, FTSE +1.10%, CAC +0.42%

Bursa Saham Asia dibuka mayoritas melemah dimana investor masih mengamati lonjakan virus covid 19 yang terjadi di AS dan China. Selain itu meningkatnya tensi ketegangan China India menekan bursa dikawasan regional. Hang Seng +0.73%, Shanghai -0.02%, Nikkei -0.52%

Harga minyak mentah dunia ditutup menguat setelah rencana pengetat pasokan minyak oleh para produsen OPEC+. Harga emas menguat didorong oleh melonjaknya kasus baru corona virus. WTI+0.08%, Brent Oil+0.69%, Gold +0.60%.

IHSG pada perdagangan hari ini diperkirakan akan **BEARISH** dengan Range pergerakan **4850-4950** dengan saham-saham yang dapat diperhatikan : **AKRA ADRO CPIN ASSA SMGR KLBF**

MARET DATA

AMERIKA

DOW 30	25,871.46	-208.64	-0.80%
S&P 500	3,098.02	-17.32	-0.56%
NASDAQ	9,946.12	+3.07	+0.03%

EUROPE

DAX	12,330.76	+49.23	+0.40%
FTSE 100	6,292.60	+68.53	+1.10%
CAC 40	4,979.45	+20.70	+0.42%

ASIA

SHANGHAI	2,967.06	-0.57	-0.02%
HANGSENG	24,643.89	+178.95	+0.73%
SET	1,370.82	-2.16	-0.16%
KOSPI	2,132.93	-8.39	-0.39%
JCI	4,942.28	+17.03	+0.35%
NIKKEI	22,361.50	-117.29	-0.52%
ASX	5,905.50	-37.10	-0.62%

COMMODITIES

GOLD	1,763.55	+10.55	+0.60%
WTI OIL	39.86	+0.03	+0.08%
BRENT OIL	42.25	+0.29	+0.69%
COAL	59.45	+0.45	+0.76%
PALM OIL	2538	+83.00	+3.38%
TINS	16,910.00	+20.00	+0.12%
NICKEL	12,797.50	+50.00	+0.39%

EVENT & ECONOMIC CALENDER



ECONOMIC CALENDER :

GLOBAL

220620	US EXISTING HOME SALES (MoM) JAPAN PMI SERVICE
230620	FANCE PMI MANUFACTURING (JUN) GERMAN PMI MANUFACTURING (JUN) GBP PMI MANUFACTURING US PMI MANUFACTURING (JUN) US NEW HOME SALES (MoM) US API CRUDE OIL STOCK
240620	US CRUDE OIL INVENTORIES
250620	US GDP Q1 (QoQ) US INITIAL JOBS CLAIMS JAPAN CORE CPI

CORPORATE ACTION :

DEVIDEN

220620	SPTO RP 20 (CUM 2206, PAYMENT 0607) MYOH USD 0,0068 (CUM 2206, PAYMENT 1607)
230620	TRIS RP 1.5 (CUM 2306, PAYMENT 1707)
240620	ASII RP 157 (CUM 2406, PAYMENT 1007)
250620	SRTG RP 55 (CUM 2506, PAYMENT 1507) PZZA RP 29.79 (CUM 1506, PAYMENT 1607)

RUPS

220620	PICO HELI FIRE BSSR
230620	YULE
240620	NELY MIKA KREN IPOL ENVY CASH BRMS BNBR
250620	TMAS PEHA MEDC BKSL
260620	SATU SAMF PNBN MYOR MTDL LMPI IPCC IDPR GWSA GPRA GMTD FPNI DAYA CFIN BABP

IPO

RIGTH ISSUE

220620	DNAR (RATIO NEW 9: OLD 22) RP 197 TRADING PERIOD 300620 - 100720
240620	MCOR (RATIO NEW 128 : OLD 100) RP 150 TRADING PERIOD 300620 - 130720

JAKARTA COMPOSITE INDEX



PREVIOUS 19 JUNI 2020

CLOSING	4942.275	+0.346%
TRANSACTION	IDR 7.25 TRILLION	
FOREIGN NETT	IDR 653 BIO (SELL)	

PREDICTION 22 JUNI 2020

BEARISH
RANGE 4850-4950

INVERTED HAMMER
STOCHASTIC : DOWNTREND
MACD : HISTOGRAM NEGATIF DAN DEATHCROSS

TECHNICAL RECOMENDATION



AKRA – PT AKR CORPORINDO TBK

CLOSING 19/6/2020 RP 2590 (+2%)

**SELL ON STRENGTH
TAKE PROFIT 2670**

**DOJI STAR
STOCHASTIC : OVERBOUGHT
MACD : HISTOGRAM POSITIF DAN NETRAL**

TECHNICAL RECOMENDATION



ADRO – PT ADARO ENERGY TBK

CLOSING 19/6/2020 RP 1040 (+1.0%)

BUY

TARGET PRICE 1095

STOPLOSS < 1030

GRAVESTONE DOJI

STOCHASTIC : UPTREND

MACD : HISTOGRAM NEGATIF MENGECIL DAN BERSIAP GOLDEN CROSS

TECHNICAL RECOMENDATION



CPIN – PT CHAROEN POKPHAND INDONESIA TBK

CLOSING 19/6/2020 RP 5675 (+2.3%)

BUY

TARGET PRICE 6000

STOPLOSS < 5650

INSIDE BAR

STOCHASTIC : DOWNTREND

MACD : HISTOGRAM NEGATIF DAN DOWNTREND

TECHNICAL RECOMENDATION



ASSA – PT ADI SARANA ARMADA TBK

CLOSING 19/6/2020 Rp 436 (+6.9%)

BUY

TARGET PRICE 472

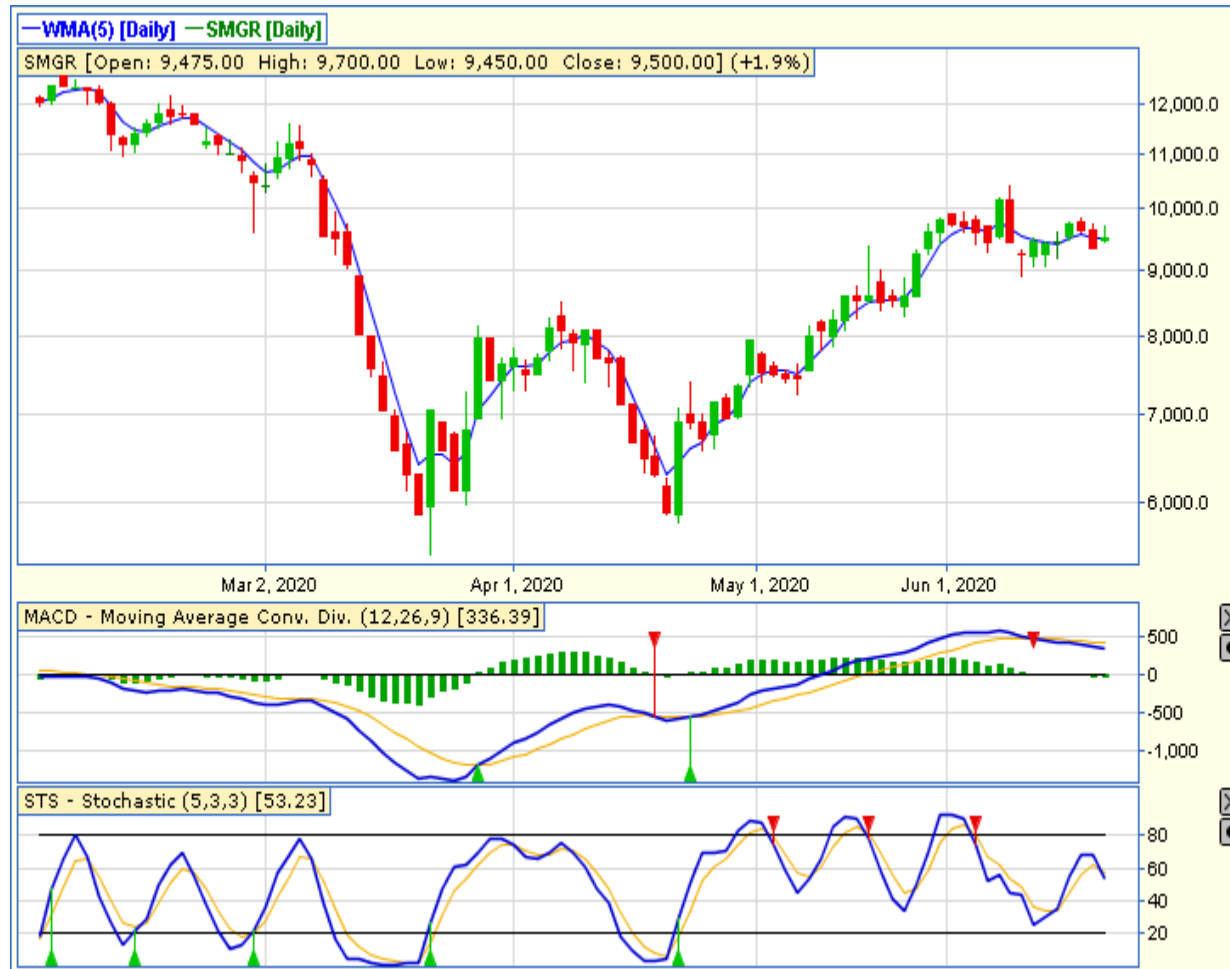
STOPLOSS < 422

BREAK OUT TRIANGLE

STOCHASTIC : UPTREND

MACD : HISTOGRAM POSITIF DAN UPTREND

TECHNICAL RECOMENDATION



SMGR – PT SEMEN INDONESIA (PERSERO) TBK

CLOSING 19/6/2020 RP 9500 (+1.9%)

BUY

TARGET PRICE 9825

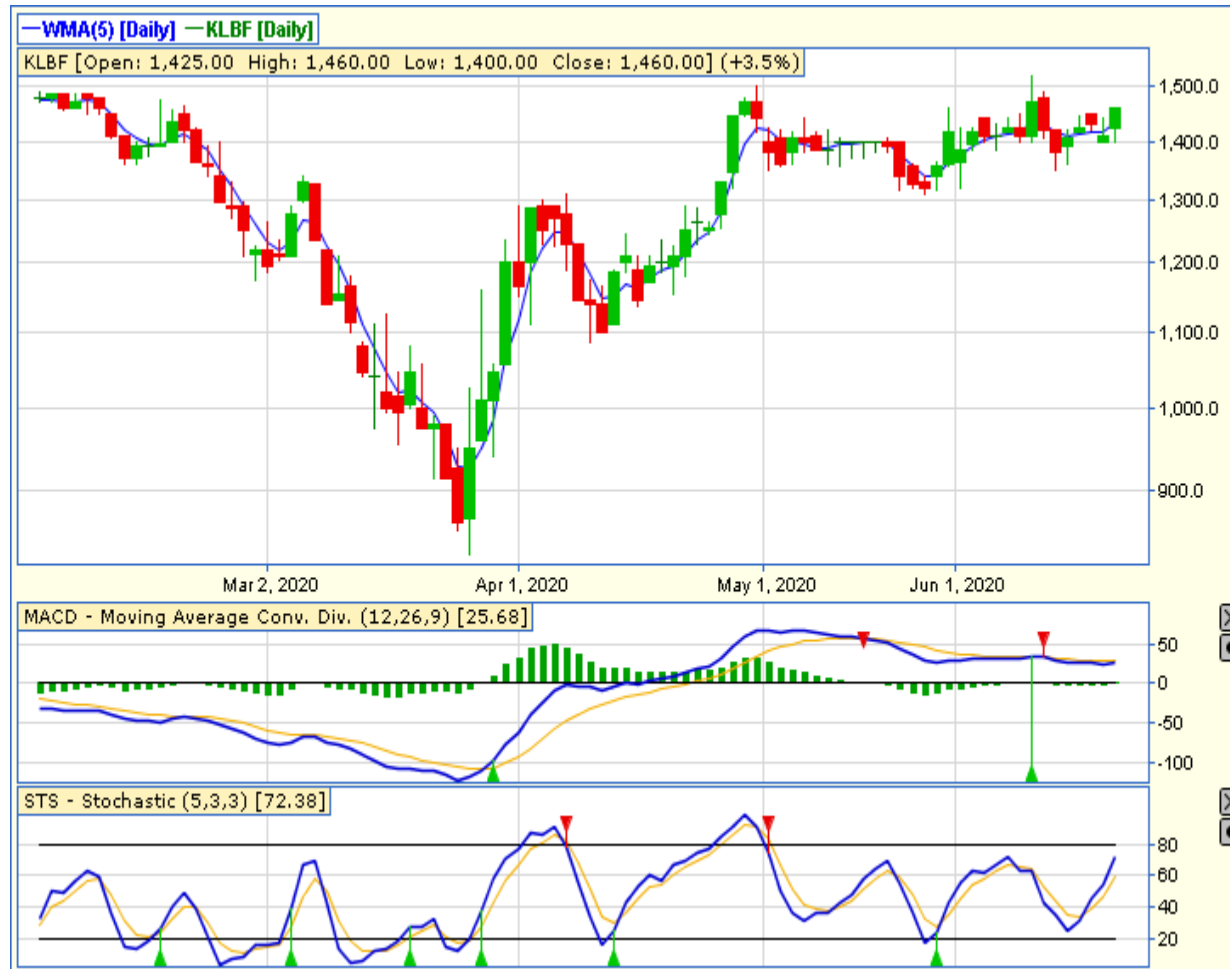
STOPLOSS < 9450

GRAVESTONE DOJI

STOCHASTIC : DOWNTREND

MACD : HISTOGRAM NEGATIF DAN DOWNTREND

TECHNICAL RECOMENDATION



KLBF – PT KALBE FARMA TBK

CLOSING 19/6/2020 RP 1460 (+3.5%)

**SELL ON STRENGTH
TAKE PROFIT 1520**

**BREAK OUT TRIANGLE
STOCHASTIC : UPTREND
MACD : HISTOGRAM NEGATIF MENGECIL DAN
BERSIAP GOLDEN CROSS**

RESEARCH TEAM



YULIANA

**RESEARCH ANALYST &
CORPORATE FINANCE**



DIMAS WP PRATAMA, CSA

TECHNICAL ANALYST

EQUITY CAPITAL MARKET TEAM



JESSIE JAMES

HEAD OF EQUITY SALES



PRASETYO NUGROHO

HEAD OF DEALING ROOM



GABRIELLA PRATIWY

HEAD OF ONLINE TRADING